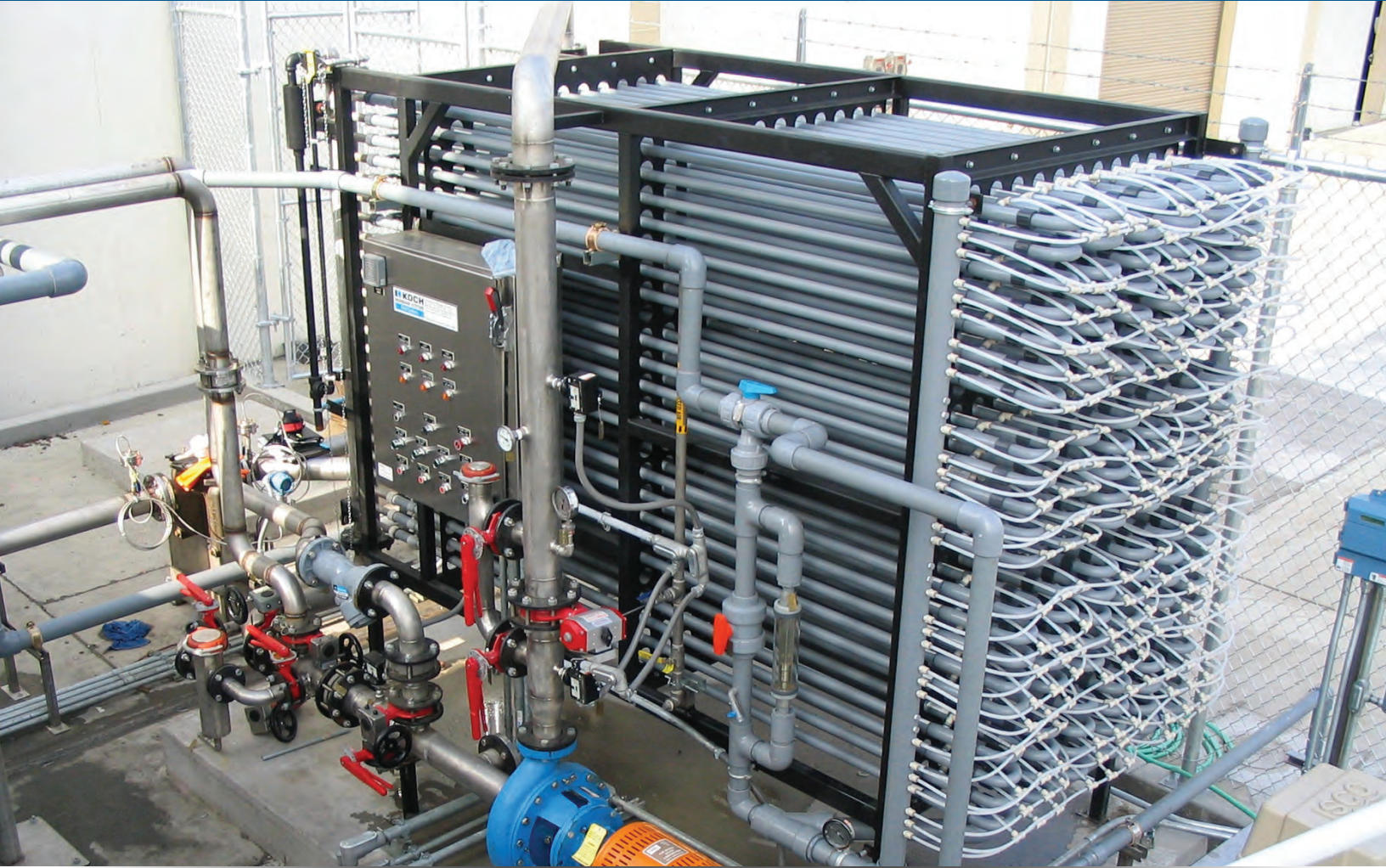


# KONSOLIDATOR™ System

Clog-Resistant Tubular Ultrafiltration



**KOCH**<sup>™</sup>  
SEPARATION SOLUTIONS

*Separation Technologies for a Better Future™*

# The Ultimate Ultrafiltration System for Challenging Wastewater and Process Stream Concentration

## Over 50 Years of Membrane Experience

Koch Separation Solutions (KSS) is a global leader in membrane filtration technologies with over 50 years of membrane experience and thousands of system installations worldwide. The KONSOLIDATOR™ ultrafiltration system is designed with versatility and durability in mind. Featuring robust tubular membranes, the system is an economic and environmentally efficient solution to tackle streams high in emulsified oils, grease, heavy metals, and suspended solids. The KONSOLIDATOR system is an ideal solution for wastewater treatment and other industrial applications such as latex, colloidal silica, and more.



## Tubular Membranes

The KONSOLIDATOR system features FEG PLUS® or ULTRA-COR tubular membranes in an open-channel configuration with maximum feed TSS concentrations up to 500,000 mg/L. These durable membranes can withstand harsh chemical environments, making it an ideal solution to treat wastewater streams for applications such as metal working, pulp and paper, or oil and gas. For high-fouling applications, spongeballs are used to enhance cleaning of the FEG PLUS tubes by scrubbing away solids that have accumulated on the membrane surface, eliminating clogs and minimizing downtime due to frequent cleaning cycles, sludging, and repair.

## Applications

- **Metal working:** Eliminate the need for sludge-producing flocculants, block penetration of precipitated metals, and meet discharge requirements
- **Food & beverage:** Recover and reuse food processing by-product waste streams, exceed discharge requirements for most municipalities, easily handle greases and fats, emulsified oils, bacteria, viruses, and biological organics (MBR)
- **Oil & gas:** Treat effluent on-site, reuse water and wastewater, offer more flexible water management
- **Pulp & paper:** Treat wastewater for factory reuse to lower costs and water dependence and easily process inks, dyes, pigments, and coatings



FEG PLUS 1-inch Tubular Membranes



ULTRA-COR™ Half-inch Tubular Membranes

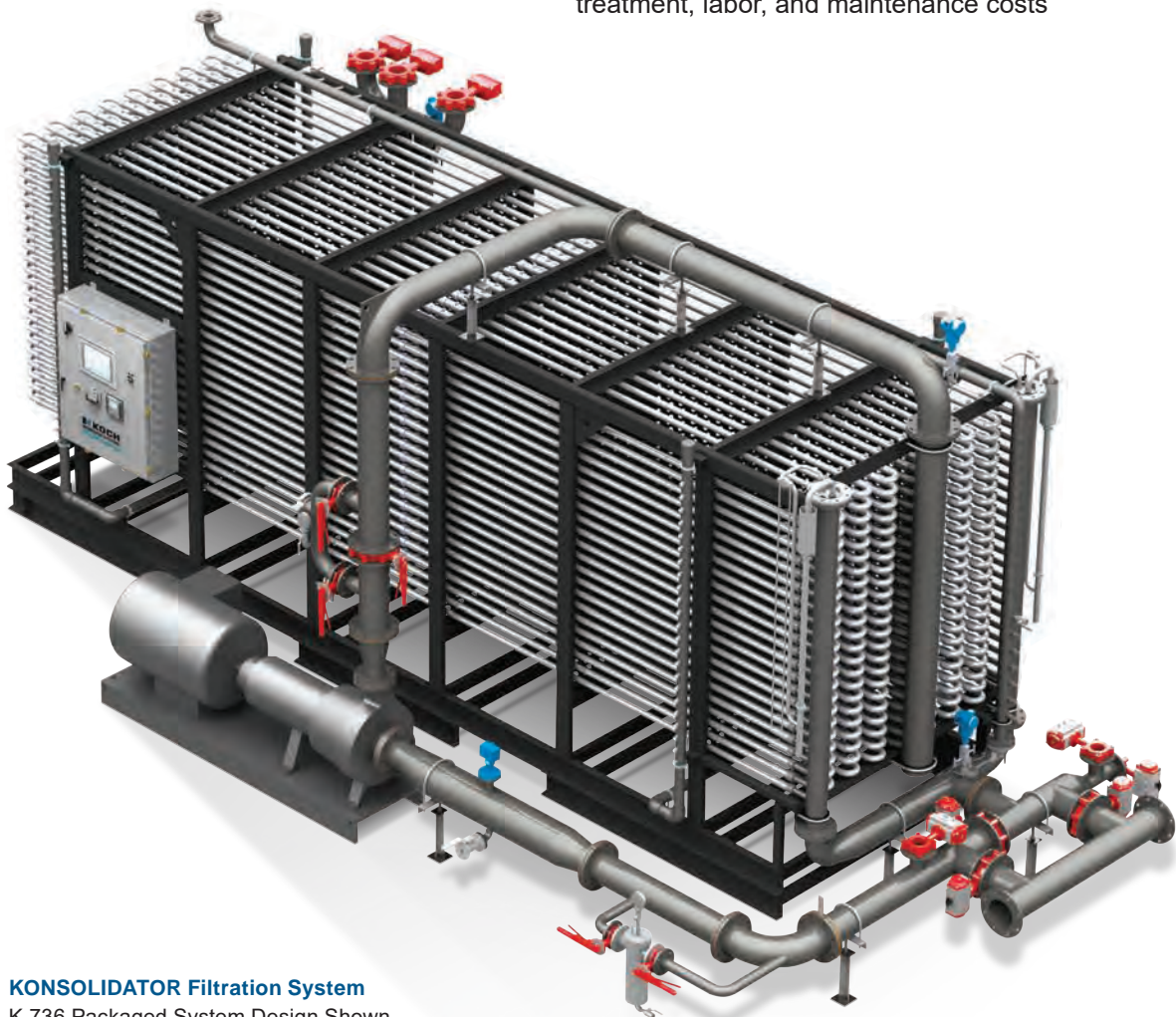
# Robust, Clog-Resistant Tubular Ultrafiltration

## KONSOLIDATOR System

Available in seven standard sizes, the KONSOLIDATOR™ system can treat feed capacities starting at 200 GPD (0.75 m<sup>3</sup>/day) and is easily expandable and scalable. Additionally, the system is available as Economy or Plus depending on the required level of sophistication for valves and instrumentation. The KONSOLIDATOR system offers a compact design and requires minimal system connections, allowing for fast and easy installation. The treated wastewater is often suitable for factory reuse, offering an environmentally conscious alternative to discharge.

## Benefits

- Mechanical spongeball cleaning eliminates clogging and reduces downtime, cleaning frequency, and maintenance
- Produce clean effluent ready for factory reuse, recycle clean effluent and concentrate hazardous waste to minimize treatment and disposal costs as well as environmental impact
- High solids and pH tolerance combined with mechanical cleaning reduces the need for flocculants and other chemical pretreatments
- Simple and compact design, intelligent user interface, and outstanding membrane performance for increased system reliability
- Efficient operation lowers waste disposal, chemical treatment, labor, and maintenance costs



**KONSOLIDATOR Filtration System**  
K-736 Packaged System Design Shown



## Koch Separation Solutions

Koch Separation Solutions (KSS) is a global leader in separation technologies. With best-in-class domain expertise, technologies and systems, KSS is uniquely positioned to help customers purify and recover valuable process streams and achieve sustainability goals across food and beverage, life science, and general industrial markets.

## Services & Support

KSS ASSIST™ Service & Maintenance Program • RELCO After-Market Services • SepTrac™ Smart System



[www.kochseparation.com](http://www.kochseparation.com) • [getinfo@kochsep.com](mailto:getinfo@kochsep.com)

**KOCH**  
SEPARATION SOLUTIONS

*Separation Technologies for a Better Future™*

For complete contact information and listing of our global locations, visit [www.kochseparation.com](http://www.kochseparation.com)  
©2021 Koch Separation Solutions, Inc. All rights reserved worldwide. For related patent and trademark information, visit [www.kochseparation.com/legal](http://www.kochseparation.com/legal).  
Koch Separation Solutions, Inc. is a Koch Engineered Solutions, LLC company. 11/21